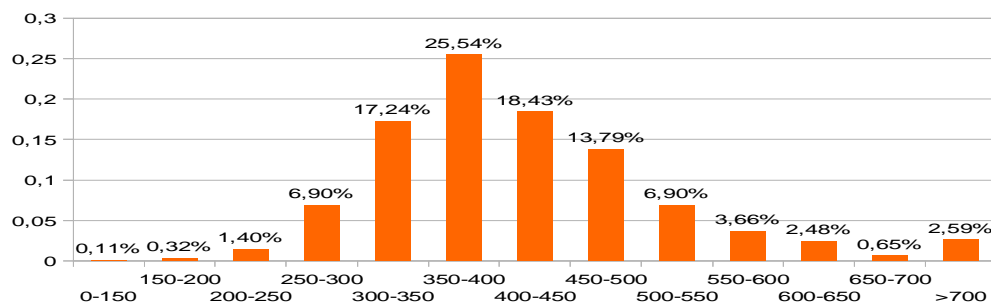
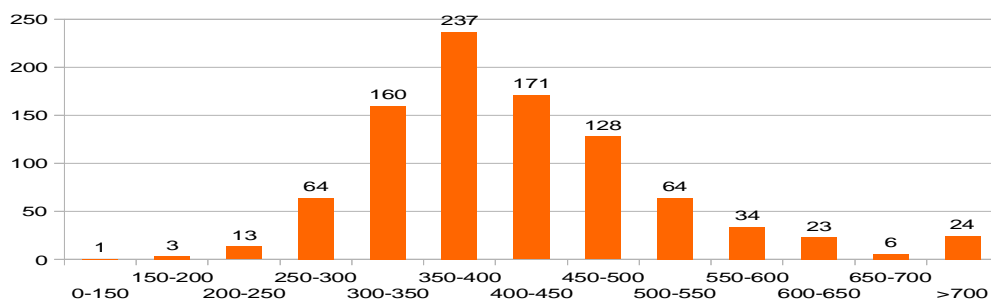
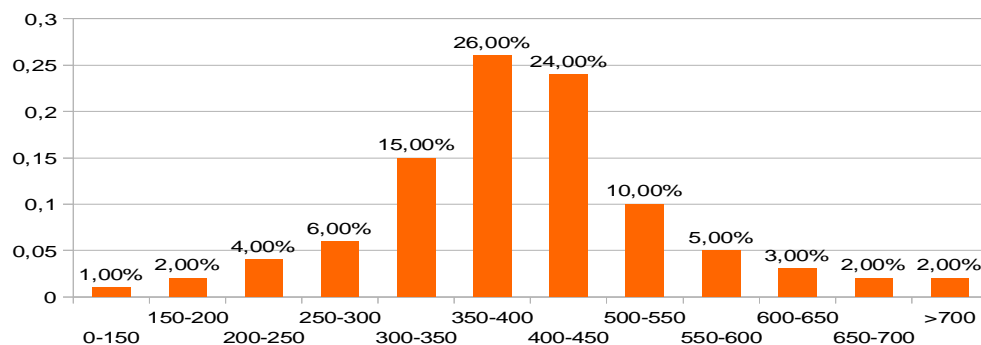
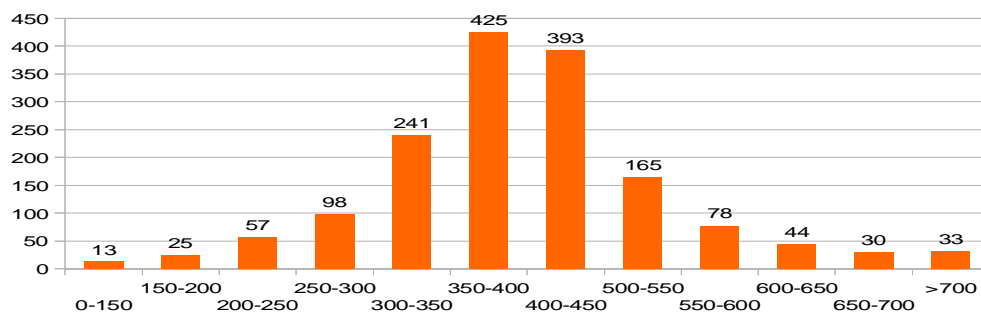


## E.9 Confronto distribuzione alloggi per canone mensile (2015 e 2004-2010)

**2015:**



**2004-2010:**



Dal confronto dei due grafici (2015 e 2004-2010) si possono notare differenze rilevanti nelle fasce di canone 400-450 dove si osserva un abbassamento del quasi 6% e nella fascia 450-500 con un aumento del quasi 4%.